



Focus on Heroin

Heroin can affect anyone, in any neighborhood, with any economic background:

- ▶ In July 2015, there were 16 likely heroin related deaths recorded in Milwaukee County in one week
- ▶ In 2014 in Milwaukee County there were 248 drug overdose deaths - 183 were opiate or heroin related

Milwaukee County Medical Director

Someone uses heroin in the US



National Institute on Health

According to the Centers for Disease Control:

- ▶ Four in five heroin users started by abusing prescription drugs
- ▶ The majority of people who abuse prescription medications get them from family or friends, often in the home medicine cabinet

Signs of possible heroin abuse:

What to watch for...

- Loss of interest in family
- Sudden decrease in appetite or weight loss
- Drop in grades or increased absenteeism
- Poor hygiene or change in personal appearance
- Wearing long sleeves in the summer or hot weather to hide track marks

Have you noticed...

- Missing money or valuables
- Burnt or missing spoons
- Small pieces of folded aluminum foil or cotton balls
- Empty baggies
- Tube like objects - inkless pens, straws, rolled money



West Allis West Milwaukee Community Coalition

6737 W. Washington Street, Ste. 2225
West Allis, WI 53214

Phone: 414-604-3506
Email: coalition@wawm.k12.wi.us

www.wawmcc.org

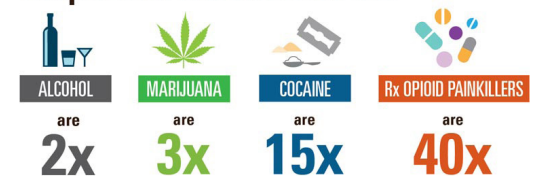
Heroin use is part of a larger substance abuse problem.

Nearly all people who used heroin also used at least 1 other drug.

Most used at least 3 other drugs.

Heroin is a highly addictive opioid drug with a high risk of overdose and death for users.

People who are addicted to...



...more likely to be addicted to heroin.

SOURCE: National Survey on Drug Use and Health (NSDUH), 2011-2013.



Focus on Heroin

What does heroin look like?



White to dark brown powder or tar-like substance



Become Informed • Become Involved • Become Invested

Parents

- ▶ Talk early, openly and often.
- ▶ Be clear that drug use will not be condoned.
- ▶ Lock up your medications - do not allow access.
- ▶ Explain the dangers of using someone else's prescription medication.
- ▶ Discuss the consequences of using drugs; physical effects, family rules and legal risks.

Community

- ▶ Know your neighbors and their cars.
- ▶ Watch for suspicious activity.
- ▶ Look out for drug paraphernalia; syringes, pipes.
- ▶ Be aware of noxious or musty smells.
- ▶ Join your neighborhood Block Watch.
- ▶ Be safe - do not confront or openly record information.
- ▶ Call Crimestoppers 414-476-2274, anonymously.

Learn the facts about drug abuse.
Call 2-1-1 for treatment information and other resources.



Properly dispose of medication



West Allis Police Department
24 hour drop box
11301 West Lincoln Avenue
414-302-8000

West Milwaukee Police Department
Drop-box available in the lobby
4775 West Beloit Road
414-645-2151

WAPD Community Service Bureau
M-F 8:00 am - 4:00 pm
6900 West National Avenue
414-302-8050 ~ Call First

YOU make a difference in our community whenever you support and encourage a teen to make positive and healthy choices.